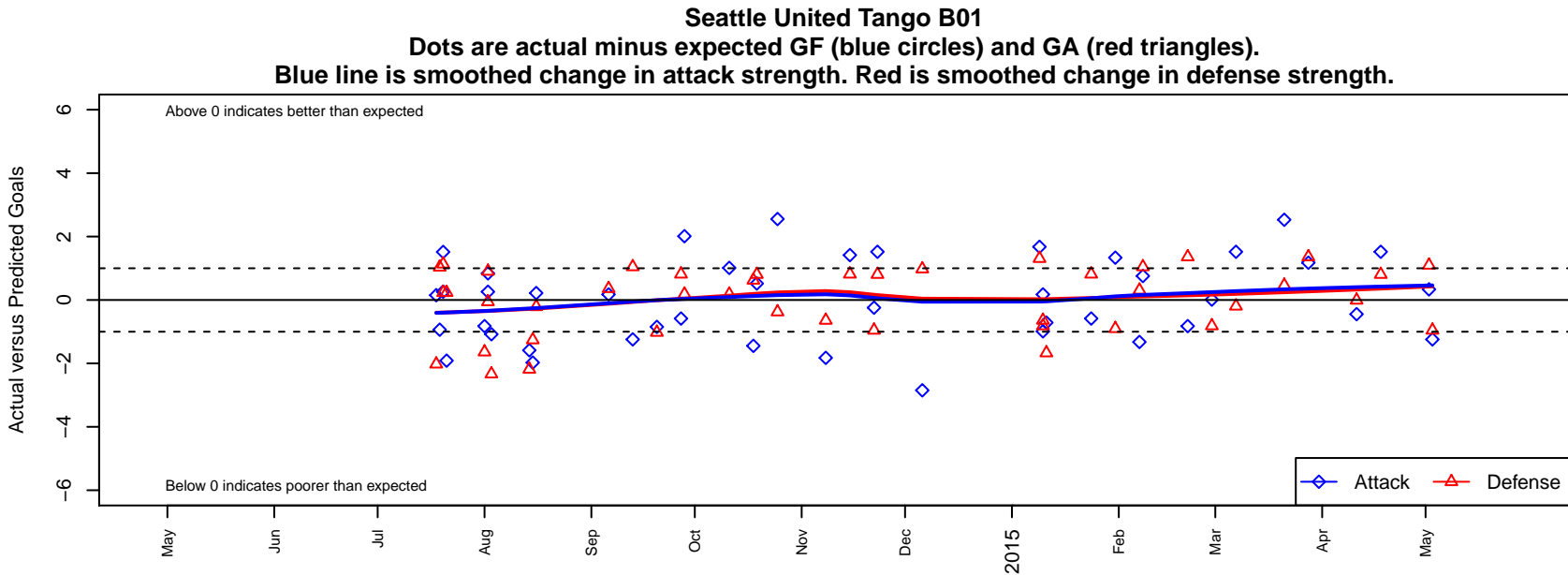


Seattle United Tango B01

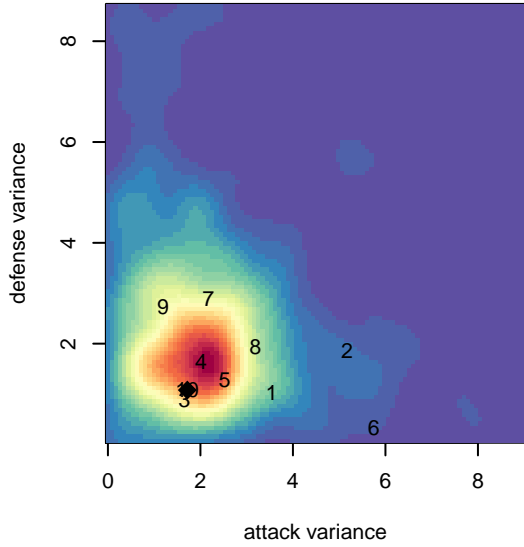
Seattle United
 Seattle, WA
 B01 total strength=1140
 attack=3.83 defense=2.75
 fall league = RCL B01 Div 2
 spr league = Win RCL B01 Div 2

alt names used:
 SEATTLE UNITED TANGO B01 (WA)
 SEATTLE UNITED TANGO B01 (WA)
 Seattle United B01 Tango B
 SEATTLE UNITED TANGO B01 (WA)
 2013 Seattle United B01 Tango B
 Seattle United B01 Tango
 Seattle United B01 Tango B
 Seattle United B01 Tango B

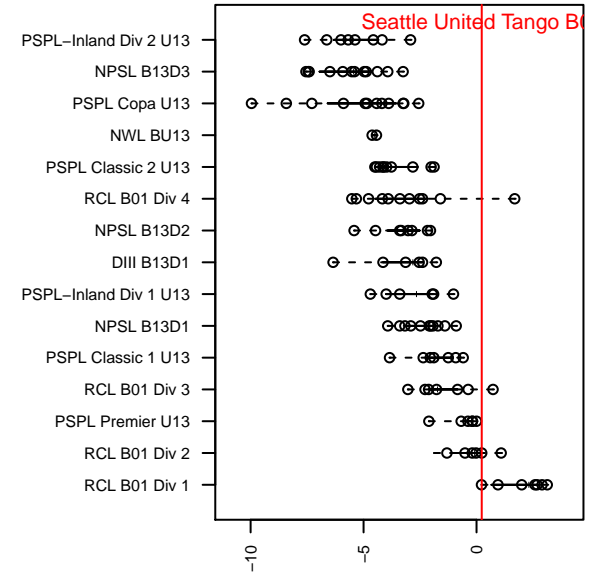
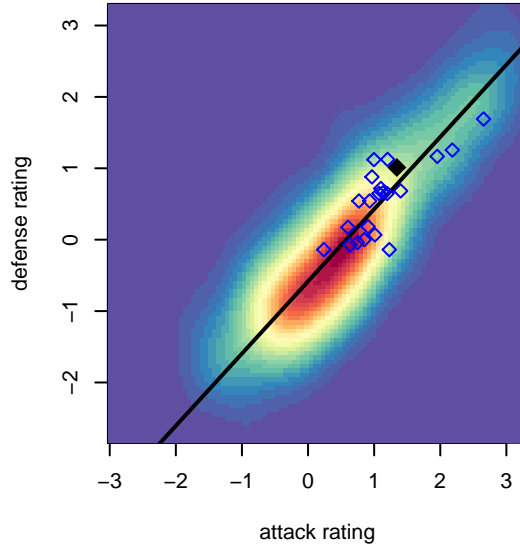
Venues played:
 2014 Nike Crossfire Challenge Silver U13
 2014 WA Rush Cup B13 Gold U13
 2014 Bigfoot Gold U13
 2014 RCL B01 Div 2
 2014 PacNW Winter Classic Premier U13
 2014 Win RCL B01 Div 2
 2014 WYS Presidents Cup B01 Division 1



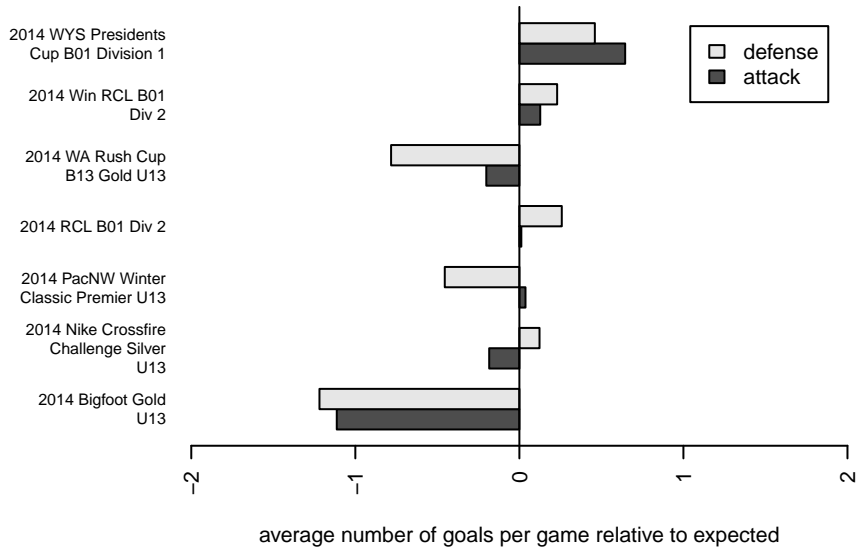
**attack and defense variance (black dot)
relative to other teams
and top 10 in region**



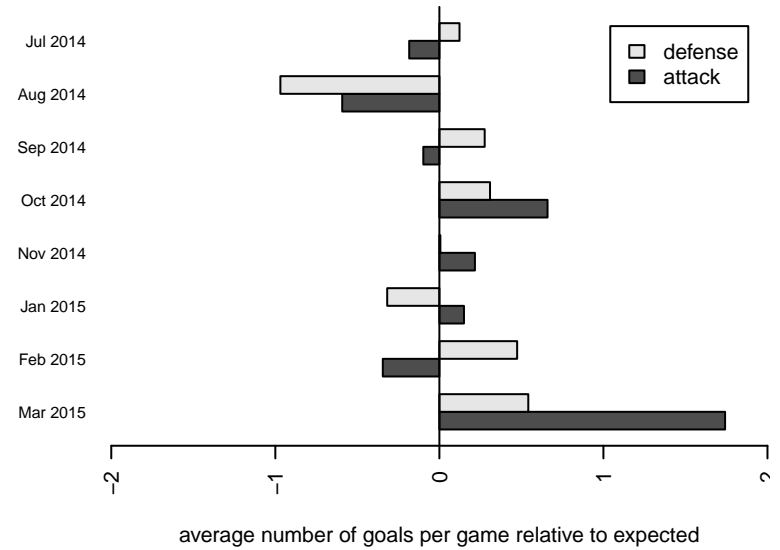
**attack and defense rating
relative to others at age
and all opponents in last 13 months**



Performance relative to 13 month average



Performance relative to 13 month average



date	home		away		venue	pred.home	pred.away
2015-05-03	Seattle United Tango B01	0	Crossfire Premier B B01	2	2014 WYS Presidents Cup B01 Division 1	1.24	1.05
2015-05-02	Seattle United Tango B01	2	PacNW White B01	0	2014 WYS Presidents Cup B01 Division 1	1.67	1.10
2015-04-18	Eastside FC White B01	0	Seattle United Tango B01	5	2014 WYS Presidents Cup B01 Division 1	0.80	3.48
2015-04-11	Seattle United Tango B01	3	FC Salmon Creek Cobras B01	1	2014 WYS Presidents Cup B01 Division 1	3.45	0.99
2015-03-28	PacNW Blue B01	0	Seattle United Tango B01	3	2014 WYS Presidents Cup B01 Division 1	1.36	1.82
2015-03-21	Seattle United Tango B01	7	Crossfire Premier C B01	0	2014 WYS Presidents Cup B01 Division 1	4.47	0.46
2015-03-07	Seattle United Tango B01	5	Eastside FC White B01	1	2014 Win RCL B01 Div 2	3.48	0.80
2015-02-28	NWN Red B01	2	Seattle United Tango B01	2	2014 Win RCL B01 Div 2	1.18	1.99
2015-02-21	PacNW Blue B01	0	Seattle United Tango B01	1	2014 Win RCL B01 Div 2	1.36	1.82
2015-02-08	Crossfire Premier B B01	0	Seattle United Tango B01	2	2014 Win RCL B01 Div 2	1.05	1.24
2015-02-07	WPFC White B01	1	Seattle United Tango B01	0	2014 Win RCL B01 Div 2	1.31	1.32
2015-01-31	Seattle United Tango B01	3	PacNW White B01	2	2014 Win RCL B01 Div 2	1.67	1.10
2015-01-24	Seattle United Tango B01	1	Snohomish United Black B01	1	2014 Win RCL B01 Div 2	1.59	1.81
2015-01-11	PacNW Maroon B01	7	Seattle United Tango B01	0	2014 PacNW Winter Classic Premier U13	5.33	0.71
2015-01-10	NWN Red B01	2	Seattle United Tango B01	1	2014 PacNW Winter Classic Premier U13	1.18	1.99
2015-01-10	PacNW Blue B01	2	Seattle United Tango B01	2	2014 PacNW Winter Classic Premier U13	1.36	1.82
2015-01-09	Seattle United Tango B01	3	WPFC White B01	0	2014 PacNW Winter Classic Premier U13	1.32	1.31
2014-12-06	Seattle United Tango B01	0	FWFC Blue B01	0	2014 RCL B01 Div 2	2.85	0.98
2014-11-23	Seattle United Tango B01	5	Eastside FC White B01	0	2014 RCL B01 Div 2	3.48	0.80
2014-11-22	Crossfire Premier B B01	2	Seattle United Tango B01	1	2014 RCL B01 Div 2	1.05	1.24
2014-11-15	Seattle United Tango B01	3	Snohomish United Black B01	1	2014 RCL B01 Div 2	1.59	1.81
2014-11-08	PacNW Blue B01	2	Seattle United Tango B01	0	2014 RCL B01 Div 2	1.36	1.82
2014-10-25	Seattle United Tango B01	4	Whatcom Rangers Gold B01	3	2014 RCL B01 Div 2	1.45	2.62
2014-10-19	Eastside FC White B01	0	Seattle United Tango B01	4	2014 RCL B01 Div 2	0.80	3.48
2014-10-18	Whatcom Rangers Gold B01	2	Seattle United Tango B01	0	2014 RCL B01 Div 2	2.62	1.45
2014-10-11	Seattle United Tango B01	3	NWN Red B01	1	2014 RCL B01 Div 2	1.99	1.18
2014-09-28	NWN Red B01	1	Seattle United Tango B01	4	2014 RCL B01 Div 2	1.18	1.99
2014-09-27	Snohomish United Black B01	1	Seattle United Tango B01	1	2014 RCL B01 Div 2	1.81	1.59

date	home		away		venue	pred.home	pred.away
2014-09-20	FWFC Blue B01	2	Seattle United Tango B01	2	2014 RCL B01 Div 2	0.98	2.85
2014-09-13	Seattle United Tango B01	0	Crossfire Premier B B01	0	2014 RCL B01 Div 2	1.24	1.05
2014-09-06	Seattle United Tango B01	2	PacNW Blue B01	1	2014 RCL B01 Div 2	1.82	1.36
2014-08-16	NSC Thunder B01	1	Seattle United Tango B01	4	2014 Bigfoot Gold U13	0.79	3.78
2014-08-15	Kitsap Alliance FC Red B01	2	Seattle United Tango B01	1	2014 Bigfoot Gold U13	0.74	2.97
2014-08-14	Snohomish United Black B01	4	Seattle United Tango B01	0	2014 Bigfoot Gold U13	1.81	1.59
2014-08-03	Seattle United Tango B01	0	Westside Timbers Copa B01	6	2014 WA Rush Cup B13 Gold U13	1.08	3.67
2014-08-02	WA Rush B01	1	Seattle United Tango B01	4	2014 WA Rush Cup B13 Gold U13	0.94	3.74
2014-08-02	BSC Portland Black-Legends B01	0	Seattle United Tango B01	3	2014 WA Rush Cup B13 Gold U13	0.90	2.16
2014-08-01	PacNW Blue B01	3	Seattle United Tango B01	1	2014 WA Rush Cup B13 Gold U13	1.36	1.82
2014-07-21	Seattle United Tango B01	0	NW United Premier B01	1	2014 Nike Crossfire Challenge Silver U13	1.91	1.23
2014-07-20	Seattle United Tango B01	2	Tynecastle FC B01	0	2014 Nike Crossfire Challenge Silver U13	1.74	1.13
2014-07-20	Seattle United Tango B01	5	Slammers Orange B01	1	2014 Nike Crossfire Challenge Silver U13	3.48	1.23
2014-07-19	Crossfire Oregon Green I B01	0	Seattle United Tango B01	1	2014 Nike Crossfire Challenge Silver U13	1.04	1.94
2014-07-18	FWFC Blue B01	3	Seattle United Tango B01	3	2014 Nike Crossfire Challenge Silver U13	0.98	2.85